

629 Henry Street

22,719 SF on 1.82 Acres

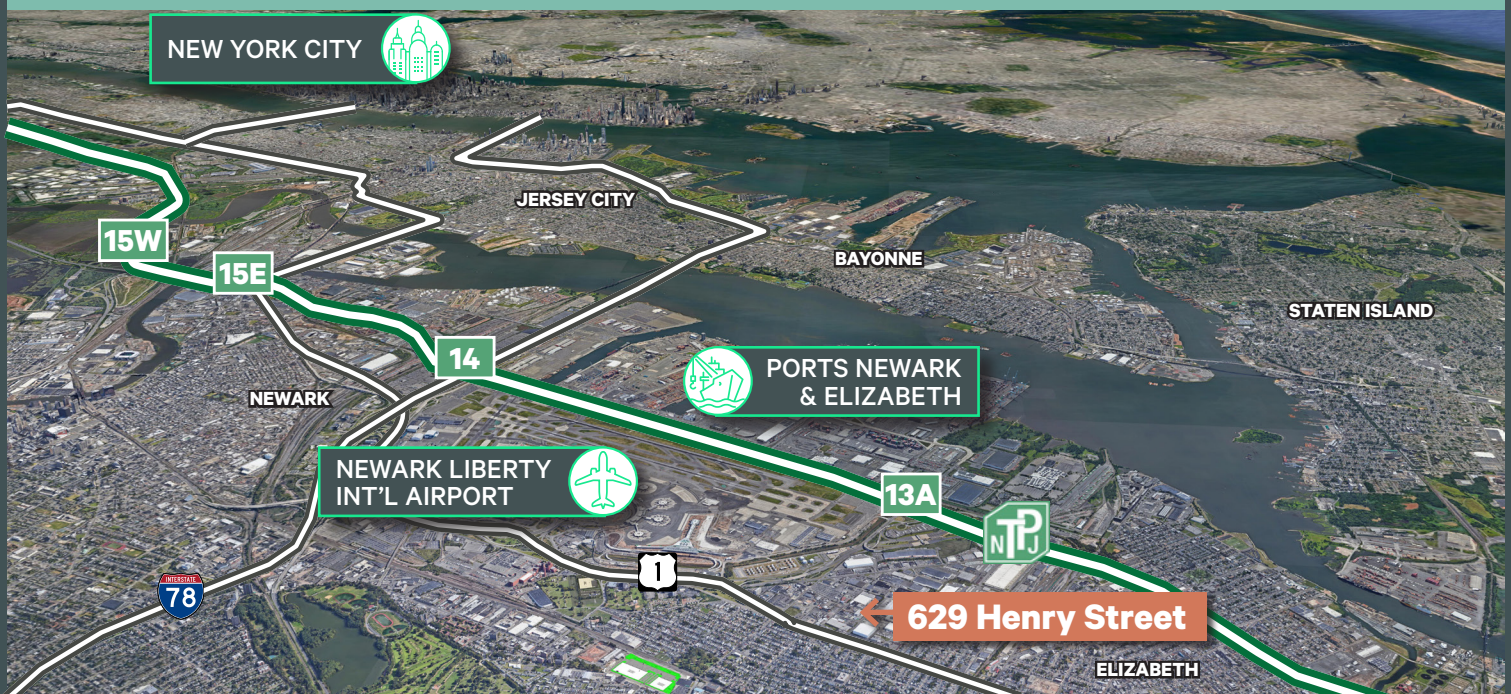
629 Henry Street
Elizabeth, NJ 07201
www.629henrystreet.com



Building Specifications

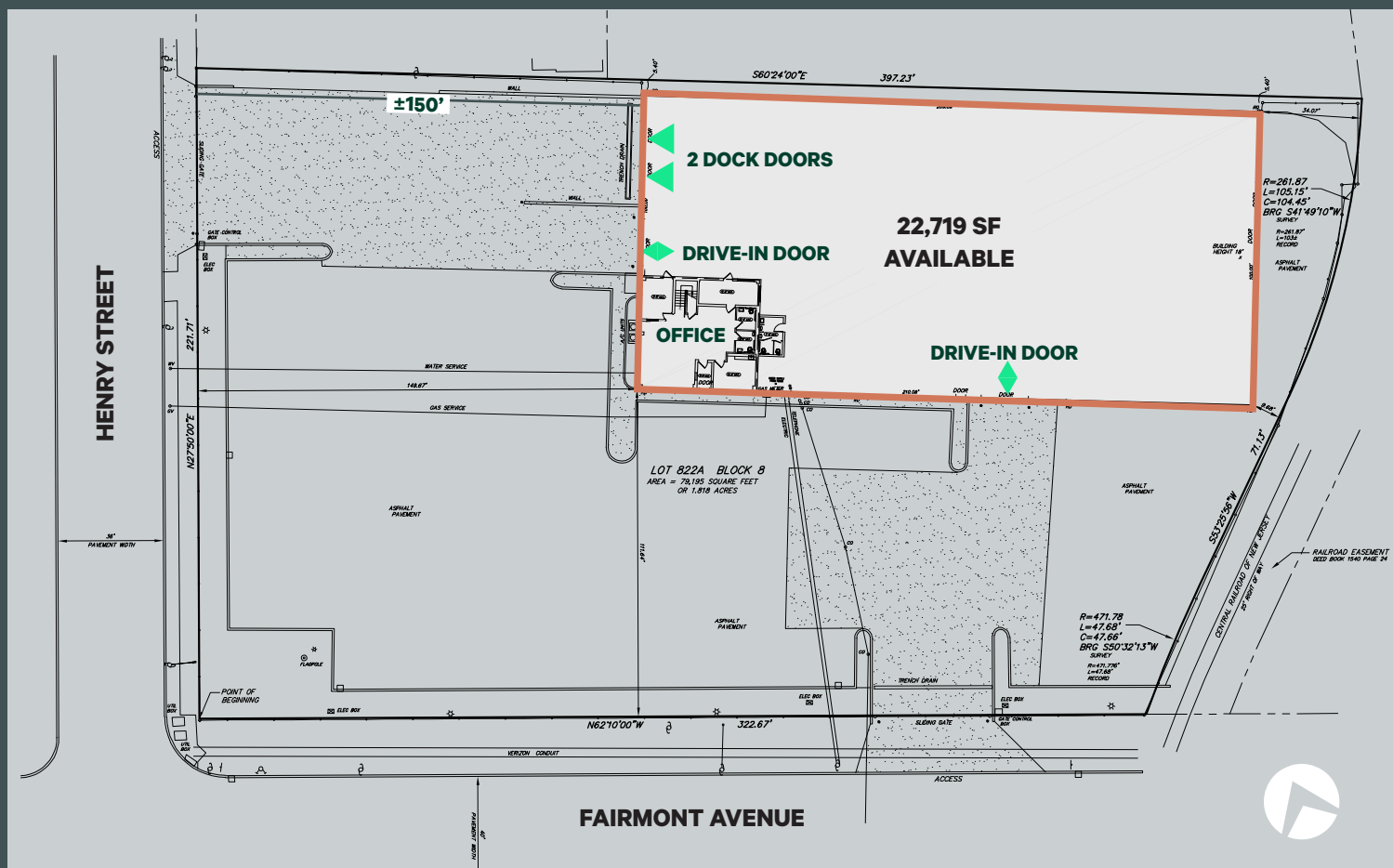
- + 22,719 SF Total
 - 21,038 SF Main Floor
 - 1,681 SF 2nd Floor
- + 1.82 Acres
- + 26' Clear Ceiling Height
- + Clear Span Warehouse
- + 2 Dock Doors
- + 2 Drive-in Doors
- + Wet Sprinkler System
- + 400 Amps

www.629henrystreet.com

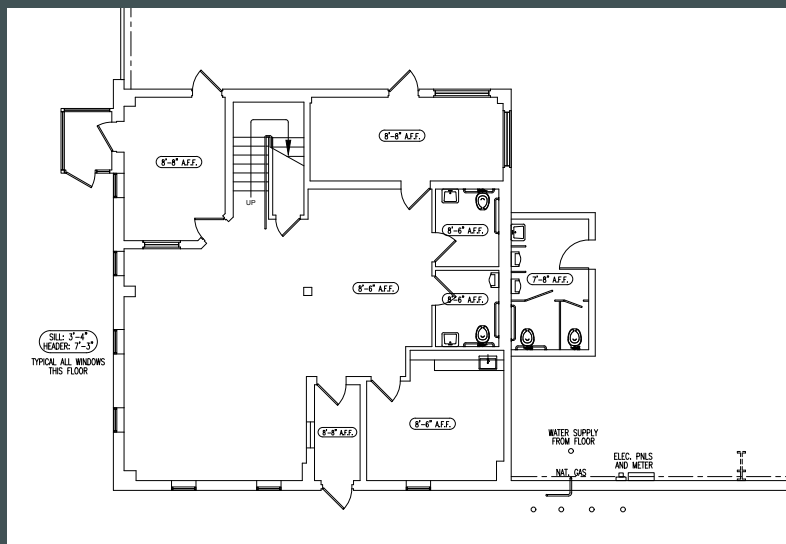


22,719 SF on 1.82 Acres For Lease

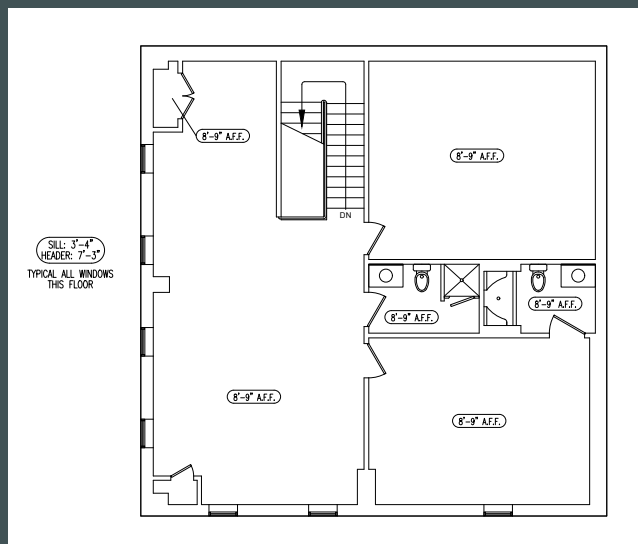
Site Plan



Ground Floor Office

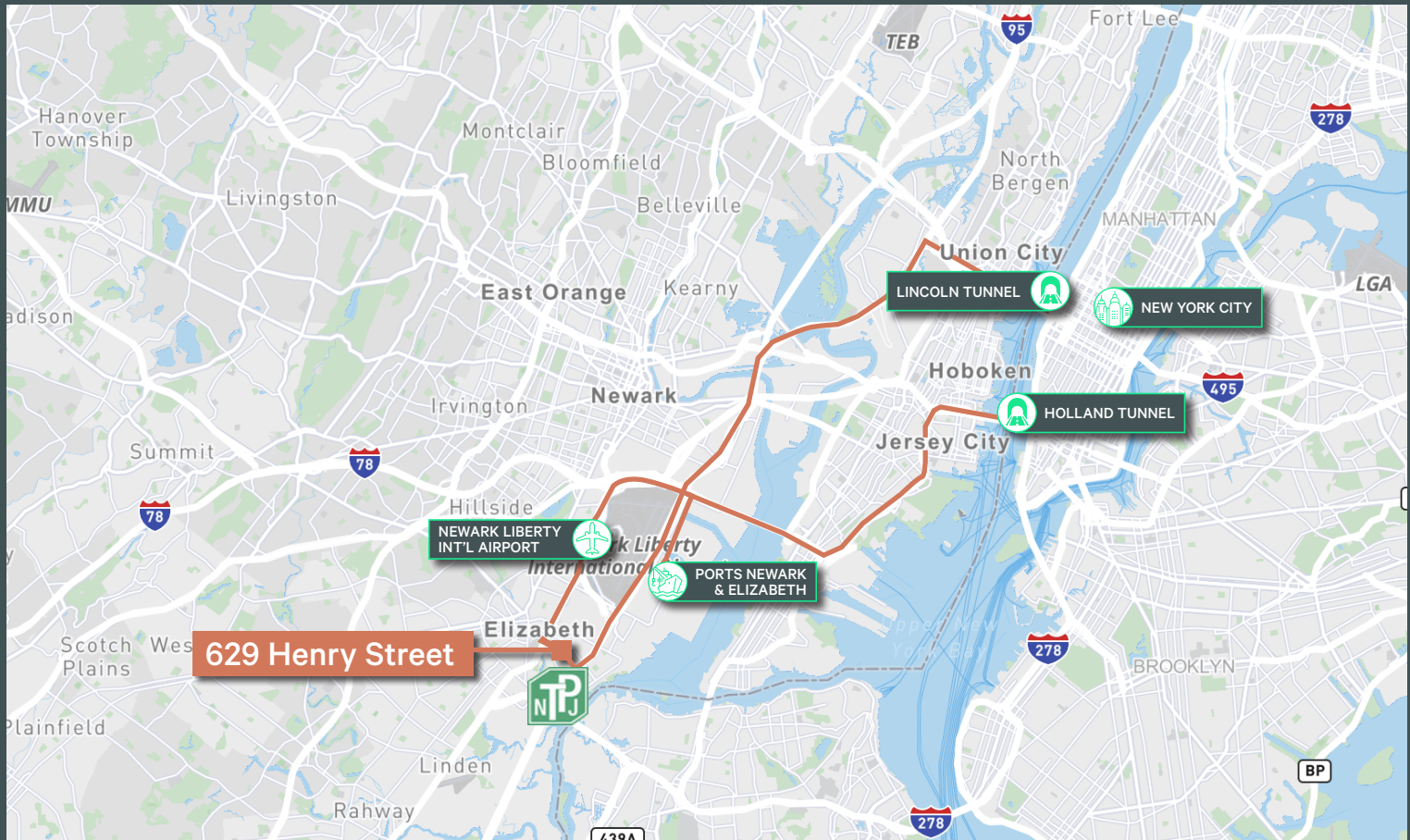


2nd Floor Office



629 Henry Street
Elizabeth, NJ 07201

22,719 SF on 1.82 Acres For Lease



Location Highlights

- + Immediate access to Route 1 & 9 and the New Jersey Turnpike
- + 1.5 miles to Newark Liberty International Airport
- + 5.5 miles to Ports Newark / Elizabeth
- + 12 miles to the Holland Tunnel
- + 15 miles to the Lincoln Tunnel
- + 19 miles to Mid-Town New York City

Contact Us

Thomas F. Monahan

Vice Chairman
o +1 712 5610
thomas.monahan@cbre.com

Larry Schifffenhaus

Executive Vice President
o +1 201 712 5809
larry.schifffenhaus@cbre.com

Stephen D'Amato

Executive Vice President
o +1 201 712 5667
stephen.damato@cbre.com

© 2023 CBRE, Inc. All rights reserved. This information has been obtained from sources believed reliable but has not been verified for accuracy or completeness. CBRE, Inc. makes no guarantee, representation or warranty and accepts no responsibility or liability as to the accuracy, completeness, or reliability of the information contained herein. You should conduct a careful, independent investigation of the property and verify all information. Any reliance on this information is solely at your own risk. CBRE and the CBRE logo are service marks of CBRE, Inc. All other marks displayed on this document are the property of their respective owners, and the use of such marks does not imply any affiliation with or endorsement of CBRE. Photos herein are the property of their respective owners. Use of these images without the express written consent of the owner is prohibited.